



PRICELIST  
February 2005

# WE MAKE SOUND CARRY



## **MESSAGE FROM THE PRESIDENT**



### **We build sound systems that go anywhere.**

Anchor Audio has a portable sound system for just about any application - small crowds, large ones, music and speech, indoors and out.

We design them to be easy to use, simple to set up, simple to pack up.

And we make them extremely rugged, because we know how portable sound equipment gets kicked around. Still we keep them compact, lightweight and easy to carry - truly portable.

But while we design our systems to be versatile, rugged and even stylish, we always make sure they deliver the clearest sound reproduction possible. Because we believe, no matter where you take it, the most important part of a sound system is the sound.

Because Anchor products are built in the USA with a six year warranty, Anchor meets the needs of even the most demanding customer. Need to replace a battery or repair a sound system? Our service department prides itself on prompt repairs and reports that sound systems which have been in the field for over 15 years are still going strong.

One call or fax to customer service and your Anchor order can be quick shipped directly to your customer. The order can be tracked via UPS online by accessing the Anchor Dealer web site and merely typing in the sales order number.

If you have technical questions, or just not sure which Anchor product fits your customer's needs, our award winning customer service staff is standing by to assist you.

Team Anchor and your dealership - an unbeatable combination

Sincerely,  
David Jacobs  
*President & CEO*

ANCHOR WIRELESS	4-5
MUSIC & VOICE SOUND SYSTEMS	
Xtreme	6-7
Liberty	8-9
Explorer Pro	10-11
AN-130	12-13
AN-1000X	14-15
PUBLIC ADDRESS SYSTEMS	
MegaVox Pro	16-17
MiniVox	18-19
Little Big Horn Megaphone	18
LECTERNS	
Ensign Pro	20-21
Seville Floor Lectern	22-23
Admiral Floor Lectern	22-23
INTERCOM SYSTEMS	
Portacom	24-25
ANCHOR TRANSPORTERS	
Cases	28
WEIGHTS & MEASURES	29
PRODUCT/MARKET MATRIX	30-31
TERMS, CONDITIONS & WARRANTY	32
PRODUCT SALES TUTORIAL	33-35

## **SALES AND CUSTOMER SERVICE - (800) 262-4671 x5**

*Let customer service make your ordering process simple!*

**FAX your order to (310) 784-0066**

Your order will be entered, reviewed for accuracy and faxed to you.

A customer service representative will call you if there are questions.

***Your order will ship on the scheduled date, and you can check the status at [www.anchoraudio.com](http://www.anchoraudio.com) including the UPS Tracking Number. If you do not have a Dealer Log-in and Password, call and we'll create one for you.***

### ***Sales Representatives can help you in many ways...***

*Product Knowledge • Product Training • Marketing*

*Mailers and Brochures • Spiff Information • Order Configuration*

*Tech Support • New Markets • How and Where to Sell Anchor Products*

*Web Site Assistance • Broadcast Fax • Broadcast Email*

*Ad Design • Catalog Design • Trade Show Support*

*Co-op Funding for Advertising and Trade Shows*

### ***Call your sales representative anytime***

Eastern United States . . . . . (800) 262-4671 x188

Western United States . . . . . (800) 262-4671 x208

Canada . . . . . (310) 784-2300 x106

South America and Mexico . . . . . (310) 784-2300 x117

UK . . . . . (310) 784-2300 x103

Other Export . . . . . (310) 784-2300 x109

# Receivers/Mics

## ANCHOR UHF WIRELESS

64 Channels – True Diversity Receiver



### 64 User-Selectable Channels

Locate clear channel in your area

Use multiple wireless units at once

### True Diversity

Selects the best signal from the two independent receivers, thus reducing dropouts & minimizing multiple distortion

### PLL Synthesized

Provides a strong solid signal by locking onto channels stopping drift

### Tone Key Noise Suppression

Utilizes microphone identification signal to lock out unwanted interference

### Rackmountable

Removable antennas for easy installation

Rackmount kit included

Half rack size

### Displays

LED channel display

RF/AF VU meters w/ peak indicators

### Receiver Inputs/Outputs

Balanced XLR output

Unbalanced 1/4" phone output

Headphone jack w/ volume control

### Microphone Transmitters

Rechargeable from receiver (batteries and cable included)

Body Pack Transmitter with Mic/Line level switch to transmit signal from CD, tape player, PC, audio mixer, etc.

Low battery indicator

PART NUM	DESCRIPTION	LIST
UHF-6400US/HH	Receiver/transmitter set with handheld mic	500
UHF-6400US/BP	Receiver/transmitter set with bodypack mic and choice of HBM-60 Headband mic or LM-60 lapel mic or CM-60 collar mic or EM60T over the ear mic.	500

## UHF MICROPHONES AND TRANSMITTERS (64 Channels)



UHF HANDHELD MIC  
WH-6400



LAPEL MIC  
LM-60



UHF BODY PACK  
WB-6400



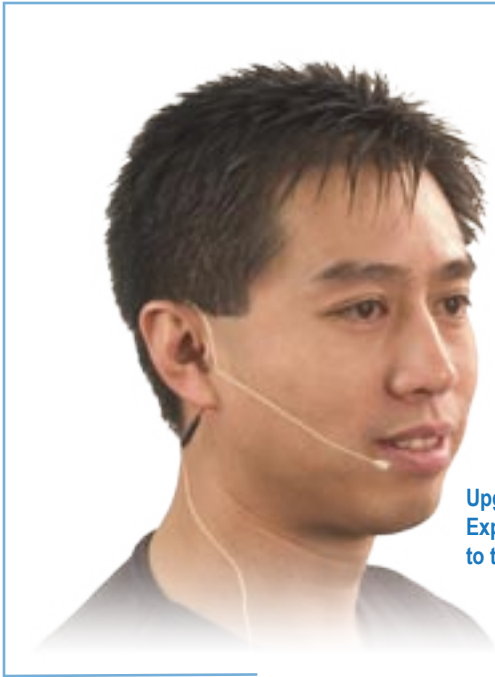
COLLAR MIC  
CM-60



HEADBAND MIC  
HBM-60



OVER THE EAR MIC  
EM-60T



Upgrade Xtreme, Liberty, Explorer, MegaVox and AN-130 packages to the UltraLite mic for only \$50/Platinum

**UltraLite Microphone**

- **Over the ear mic**  
Adjustable fit for comfort and security  
Allows use with hat, helmet or glasses  
Doesn't "mess up your hair"
- **Feather light**  
You'll forget it's there  
0.09 oz.
- **Omnidirectional**  
Allows best vocal pickup
- **Bendable mic arm**  
Adjust to place in front of your mouth
- **Connector - TA4F, compatible w/Anchor transmitters and many top brands**
- **Power requirements - 450uA 1.5v - 9v**

**UHF MICROPHONES AND TRANSMITTERS (Xtreme, Liberty, MegaVox, Ensign Pro, Explorer Pro and AN-130)**



UHF HANDHELD MIC  
WH-6000



COLLAR MIC  
CM-60



LAPEL MIC  
LM-60



HEADBAND MIC  
HBM-60



ULTRALITE MIC  
EM-60T



UHF BODY PACK  
WB-6000

**VHF MICROPHONES AND TRANSMITTERS (MiniVox) Only)**



VHF HANDHELD MIC  
WH-1000



COLLAR MIC  
CM-1000



LAPEL MIC  
LM-30



HEADBAND MIC  
HBM-35



VHF BODY PACK  
WL-1000

**VHF MICROPHONES AND TRANSMITTERS (Seville Lectern)**



SHURE VHF HANDHELD MIC  
WH-58



COLLAR MIC  
CM-60



LAPEL MIC  
LM-60



HEADBAND MIC  
HBM-60



ULTRALITE MIC  
EM-60T



SHURE VHF BODY PACK  
WB-II

**WIRED MICROPHONES**



HANDHELD MIC  
MIC-90  
(XLR connector)



HANDHELD MIC  
MIC-90P  
(1/4" phone plug)



HANDHELD MIC  
MIC-25



HANDHELD MIC  
MIC-50



GOOSENECK MIC  
LM-618



**XBP-6000 Xtreme Basic Package includes:**

XTR-6000CU1 w/CD and wireless receiver, SS-550 speaker stand, choice of transmitter: WH-6000 handheld or WB-6000 body pack and choice of mic: LM-60 lapel, HBM-60 headband, CM-60 Collar, EM-60T UltraLite

LIST  
\$2190

**XDP-6000 Xtreme Deluxe Package includes:**

XTR-6000CU1 w/CD and wireless receiver, XTR-6001 companion speaker, SC-50NL connection cable, two SS-550 speaker stands, choice of transmitter: WH-6000 handheld or WB-6000 body pack and choice of mic: LM-60 lapel, HBM-60 headband, CM-60 Collar, EM-60T UltraLite

LIST  
\$2758

**XBP-6000 Dual Xtreme Basic Package includes:**

XTR-6000CU2 w/CD and 2 wireless receivers. Accessories same as XBP-6000 plus second wireless mic

LIST  
\$2738

**XDP-6000 Dual Xtreme Deluxe Package includes:**

XTR-6000CU2 w/CD and 2 wireless receivers. Accessories same as XDP-6000 plus second wireless mic

LIST  
\$3306

PART NUM	DESCRIPTION	LIST
<b>XTREME SOUND SYSTEMS - Does not include mic</b>		
XTR-6000	Xtreme Sound System	1225
XTR-6000U1	Xtreme w/ built-in wireless receiver	1485
XTR-6000U2	Xtreme w/ 2 built-in wireless receivers	1745
XTR-6000CU1	Xtreme w/ built-in CD player & wireless receiver	1745
XTR-6000CU2	Xtreme w/ built-in CD player & 2 wireless receivers	1945
XTR-6100	Xtreme basic features sound system - single balanced and unbalanced input	820
XTR-6001	Unpowered Companion	373
<b>MICROPHONES</b>		
WH-6000	Anchor UHF wireless handheld mic	365
WB-6000	Anchor UHF wireless body pack transmitter	275
EM-60T	UltraLite, barely seen over the ear mic/TA4F, mini XLR	90
CM-60	CollarMic/TA4F, mini XLR	90
LM-60	Lapel Mic/TA4F, mini XLR	90
HBM-60	Headband Mic/TA4F, mini XLR	90
MIC-90	Professional dynamic cardioid pattern handheld mic	116
<b>ACCESSORIES</b>		
UHF-6400	Receiver/transmitter set w/ choice of mic - CM-60, HBM-60, LM-60, EM-60T	500
SS-550	Heavy-duty stand	148
MSB-201	Mic stand with boom	69
HC-1650L/X	Custom traveling hardcase on wheels w/extension handle	295
SOFT TOTE	Nylon case cover on rollers	185
NL-6000	Nylon slip cover w/ side storage compartment	47
CC-550	Speaker stand bag	105
BWK-II	Mini-mix input mixer	243
<b>CABLES</b>		
SC-50NL	50' speaker cable connects XTR-6000 to XTR-6001	64
SC-100NL	100' speaker cable connects XTR-6000 to XTR-6001	96
6000-14P	Mini 4-pin XLR to 1/4" phone plug for wireless transmission of CD, mixer or metronome	32
6000-18P	Mini 4-pin XLR to 1/8" phone plug for wireless transmission of CD, tape or metronome	32
6000-XLR	Mini 4-pin XLR to XLR phone plug for wireless transmission from mixer to another LIB or XTR	32
XLR-50MF	50' mic cable w/ XLR line out to line in for mic extension	53



The Xtreme is an AC powered sound system that delivers a powerful 123 dB of crystal clear speech projection - that's louder than a rock & roll band! With the convenience of a built-in CD player and a wireless microphone, the Xtreme is great for large indoor and outdoor events such as sporting events, press conferences, graduation ceremonies or musical productions.

Product HWD: 22.5" x 13" x 10"  
Box: 26.75" x 15.25" x 12.25"  
Ship Weight: 42 lbs.  
Add 2 lbs. for optional configurations

XBP-6000  
XTREME BASIC PACKAGE



- Weather Resistant Speaker Cone
- UV Treated - Fade Resistant Case
- Speech Projection Switch
- Built-in CD and UHF Receiver Options - 16 User-Selectable Channels (up to 2 receivers)
- Rugged CD Mechanism with Blue Back-lit Display
- Bass and Treble Controls
- XLR Balanced Output, XLR Balanced Mic Input
- Integrated Circuit Amplifier w/Short Circuit and Thermal Overload Protection
- 1/4" Line Input
- Speakon® Output for XTR-6001

# Liberty

## LBP-6000 Liberty Basic Package includes:

LIB-6000HCU1 w/CD and wireless receiver, SS-550 speaker stand, choice of transmitter: WH-6000 handheld or WB-6000 body pack and choice of mic: LM-60 lapel, HBM-60 headband, CM-60 Collar, EM-60T UltraLite

### LIST

\$2389

## LBP-6000 Dual Liberty Basic Package includes:

LIB-6000HCU2 w/CD and 2 wireless receivers. Accessories same as LBP-6000 plus choice of second wireless mic

### LIST

\$2889



## LDP-6000 Liberty Deluxe Package includes:

LIB-6000HCU1 w/CD and wireless receiver, LIB-6001 companion speaker, SC-50 connection cable, two SS-550 speaker stands, choice of transmitter: WH-6000 handheld or WB-6000 body pack and choice of mic: LM-60 lapel, HBM-60 headband, CM-60 Collar, EM-60T UltraLite

### LIST

\$2930

## LDP-6000 Dual Liberty Deluxe Package includes:

LIB-6000HCU2 w/CD and 2 wireless receivers. Accessories same as LDP-6000 plus choice of second wireless mic

### LIST

\$3435

PART NUM	DESCRIPTION	LIST
<b>LIBERTY SOUND SYSTEMS - Does not include mic</b>		
LIB-6000H	Liberty Sound System	1425
LIB-6000HU1	Liberty w/ built-in wireless receiver	1685
LIB-6000HU2	Liberty w/ two built-in wireless receivers	1965
LIB-6000HC	Liberty w/ built-in CD player	1645
LIB-6000HCU1	Liberty w/ built-in CD player & wireless receiver	1950
LIB-6000HCU2	Liberty w/ built-in CD player & 2 wireless receivers	2100
LIB-6001	Unpowered Companion	373
<b>MICROPHONES</b>		
WH-6000	Anchor UHF wireless handheld mic	365
WB-6000	Anchor UHF wireless body pack transmitter	275
EM-60T	UltraLite, barely seen over the ear mic/TA4F, mini XLR	90
CM-60	CollarMic/TA4F, mini XLR	90
LM-60	Lapel Mic/TA4F, mini XLR	90
HBM-60	Headband Mic/TA4F, mini XLR	90
MIC-90	Professional dynamic cardioid pattern handheld mic	116
<b>ACCESSORIES</b>		
UHF-6400	Receiver/transmitter set w/ choice of mic - CM-60, HBM-60, LM-60, EM-60T	500
SS-550	Heavy-duty stand	148
MSB-201	Mic stand with boom	69
HC-1650L/X	Custom traveling hardcase on wheels w/extension handle	295
SOFT TOTE	Nylon case cover on rollers	185
NL-6000	Nylon slip cover w/ side storage compartment	47
CC-550	Speaker stand bag	105
BWK-II	Mini-mix input mixer	243
LIBH-BAT	Heavy-duty replacement battery (2 required)	38
<b>CABLES</b>		
SC-50	50' speaker cable; 1/4" phone plugs	37
SC-50EX	50' speaker cable; 1/4" male to female phone plugs	53
6000-14P	Body pack to 1/4" phone for wireless transmission of CD	32
6000-18P	Body pack to 1/8" phone for wireless transmission of CD	32
6000-XLR	Body pack to XLR phone for wireless transmission	32
LINE-30M	30' shielded line cable, male to male phone plug, connection of multiple powered units	36
XLR-50MF	50' mic cable w/ XLR line out to line in for mic extension	53





The Liberty battery powered sound system may have optional installation of one or two Anchor wireless UHF receivers and a CD player. Designed for crowds up to 1,000 people with its 117 dB of clear sound, the Liberty is used at the White House for presidential press conferences, at thousands of schools around the world, at corporate centers and on many U.S. aircraft carriers.

Liberty is rugged, reliable and easy to use.

Product HWD: 22.5" x 13" x 10"  
Box: 26.75" x 15.25" x 12.25"  
Ship Weight: 50 lbs.  
Add 2 lbs. for optional configurations



LBP-6000  
LIBERTY BASIC PACKAGE

- True AC/DC, 110/220 Power Supply
- Two Universal Mic Input Jacks
- Weather Resistant Speaker Cone
- UV Treated - Fade Resistant Case
- Speech Projection Switch
- Built-in CD and UHF Receiver Options
  - 16 User-Selectable Channels (up to two receivers)
- Rugged CD Mechanism with Blue Back-lit Display
- Improved " Limiter" Circuitry reduces distortion
- Bass and Treble Controls
- 12 Volt DC Output
- 1/4" Speaker Output, 1/4" Line Output
- External Speaker Output Powers Companion Speaker
- 2 XLR Balanced Mic Inputs
- 1/4" Line Input



# Explorer Pro

## EBP-6000 Explorer Pro Basic Package includes:

EXP-6000U1 with wireless receiver, SS-550 speaker stand, choice of transmitter: WH-6000 handheld or WB-6000 body pack and choice of wireless mic: LM-60 lapel, HBM-60 headband, CM-60 Collar or EM-60T UltraLite

### LIST

\$1671

## EBP-6000 Explorer Pro Basic Dual Package includes:

EXP-6000U2 with 2 wireless receivers. Accessories same as EXP-6000U1 plus second wireless mic.

### LIST

\$2316



## EDP-6000 Explorer Pro Deluxe Package includes:

EXP-6000U1 wireless receiver, EXP-6001 companion speaker, SC-50 connection cable, two SS-550 speaker stands, choice of transmitter: WH-6000 handheld or WB-6000 body pack and choice of mic: LM-60 lapel, HBM-60 headband, CM-60 Collar or EM-60T UltraLite

### LIST

\$2156

## EDP-6000 Explorer Pro Deluxe Dual Package includes:

EXP-6000U2 with 2 wireless receivers, EXP-6001 companion speaker. Accessories same as EXP-6000U1 plus second wireless mic.

### LIST

\$2801

PART NUM	DESCRIPTION	LIST	MAP	REG	BRON	LIST
<b>EXPLORER PRO SOUND SYSTEMS</b>						
EXP-6000	Explorer Pro Sound System					910
EXP-6000U1	Explorer Pro Sound System w/ built-in receiver					1210
EXP-6000U2	Explorer Pro Sound System w/ 2 built-in wireless receivers					1510
EXP-6001	Unpowered Companion					315
<b>MICROPHONES</b>						
WH-6000	Anchor UHF wireless handheld mic					365
WB-6000	Anchor Wireless body pack transmitter					275
EM-60T	UltraLite, barely seen over the ear mic/TA4F, mini XLR (tan mic arm)					90
CM-60	CollarMic/TA4F, mini XLR					90
LM-60	Lapel Mic/TA4F, mini XLR					90
HBM-60	Headband Mic/TA4F, mini XLR					90
MIC-90	Professional dynamic cardioid pattern handheld mic					116
MIC-90P	Professional dynamic cardioid pattern handheld mic (1/4" phone plug)					116
<b>ACCESSORIES</b>						
UHF-6400	Receiver/transmitter set w/ choice of mic - CM-60, HBM-60, LM-60, EM-60T					500
SS-550	Heavy-duty stand					148
MSB-201	Mic stand with boom					69
HC-1620	Custom traveling hardcase on wheels w/extension handle					295
NL-EXP	Nylon slip cover w/ side storage compartment					42
EXP-SOFT TOTE	Nylon case cover on rollers					185
EXP-MIC TOTE	Nylon bag for mics, accessories					32
CC-550	Speaker stand bag					105
EX-BAT	Replacement battery					38
<b>CABLES</b>						
SC-50	50' speaker cable; 1/4" phone plugs					37
SC-50EX	50' speaker cable; 1/4" male to female phone plugs					53
XLR-50MF	50' mic cable w/ XLR line out to line in for mic extension					53

WH-6000, WB-6000 with Lapel Mic LM-60





The Explorer Pro offers the latest in Anchor Audio sound system technology - Class D amplifier, "voice over" music function, AC/DC operation, 110/220V power supply and much more. Single or dual UHF wireless receivers can be installed. This unit is powerful enough to operate slave companion in AC or DC mode. The Explorer Pro will soon be the favorite of teachers, rental facilities and places of worship.

Product HWD: 16.5" x 10.5" x 10"  
Box: 21" x 14" x 13"  
Ship Weight: 23 lbs.  
Add 2 lbs. for optional configurations



EBP-6000  
EXPLORER PRO BASIC PACKAGE



- True AC/DC , 110/220V Power Supply
- 1 or 2 Wireless Receivers
  - 16 User Selectable Channels
- Operates from 12V Power Source - such as automobile power port
- LED displays for Battery Level and Charge Condition
- High-Efficiency Amplifier and Full-Range Speaker System Deliver High Fidelity Sound
- "Voice Over" Music Feature
- Two Universal Input Jacks
- 110 dB @ 1 meter

# AN-130

## AN-130BP Basic Package includes:

AN-130U1 and choice of transmitter: WH-6000 handheld or WB-6000 body pack and choice of wireless mic: LM-60 lapel, HBM-60 headband, CM-60 Collar, EM-60T UltraLite

### LIST

\$644



CC-100XL - Extra Large Carrying Bag  
(Not included in package)



PART NUM	DESCRIPTION	LIST
<b>AN-130 SPEAKER MONITOR - Does not include mic</b>		
AN-130	Speaker Monitor	190
AN-130CG	Speaker Monitor - Black	190
AN-130U1	Speaker Monitor w/ built-in wireless receiver and remote control	350
AN-130RC	Speaker Monitor w/ remote control	215
AN-130DC	Speaker Monitor w/ DC output jack	205
<b>MICROPHONES</b>		
WH-6000	Anchor UHF wireless handheld mic	365
WB-6000	Anchor UHF wireless body pack transmitter	275
EM-60T	UltraLite, barely seen over the ear mic/TA4F, mini XLR (tan mic arm)	90
CM-60	CollarMic/TA4F, mini XLR	90
LM-60	Lapel Mic/TA4F, mini XLR	90
HBM-60	Headband Mic/TA4F, mini XLR	90
MIC-90P	Professional dynamic cardioid pattern handheld mic	116
<b>ACCESSORIES</b>		
SS-250	Speaker Stand for use with SB-1	106
MSB-201	Mic Stand with Boom	69
HC-1550	Traveling hard case holds 2 AN-100 or AN-1000X & 2 mics	190
HC-1610B	Projector Protector traveling hard case holds projector, AN-130 and mic	295
CC-100XL	Extra large carrying bag, holds AN-130, SB-1, body pack and mic	51
CC-100	AN-130 carrying bag	42
CC-550	Speaker stand bag	105
REMOTE-130	Infrared Remote Control	26
<b>BRACKETS</b>		
SB-1	Stand mount bracket for use with SS-250	64
SB-3	Ceiling mount bracket, black	27
SB-3P	Ceiling mount bracket, platinum	27
SB-360	Wall-mounting U bracket - 360° range of motion, black	32
SB-360P	Wall-mounting U bracket - 360° range of motion, platinum	32
RM-1	Single Rackmount (black, 3 U rack spaces)	69
RM-12	Dual Rackmount (black, 3 U rack spaces)	79



REMOTE-130 Infrared Remote Control



The AN-130 speaker monitor is the perfect choice for classrooms, conference rooms and the corporate “road warriors” who rely on their sound systems to command the audience. Plus, it’s the ideal companion for a video projector, DVD or VCR. Weighing in at only 8.5 pounds, this powerful sound system is designed for audiences up to 100 people.



AN-130BP  
AN-130 BASIC PACKAGE  
(does not include stand and mounting bracket)



Product HWD: 5.25" x 8.4" x 9"  
Box: 11" x 14" x 6"  
Ship Weight: 9 lbs.

- Built-in UHF Receiver Option
- Volume and Mute Remote Control
- 101 dB SPL from 30W Amplifier and High Efficiency Speaker
- Unbalanced Lo-Z 1/4" Mic Input
- Two RCA Summing Line Level Inputs
- Magnetically Shielded Speaker
- Bass and Treble Controls
- Woven Carbon Fiber Speaker

# AN-1000X

The AN-1000X is the most versatile powered monitor on the market. You can add it to an A/V rack setup, use it as a studio monitor, install it in a trade show booth, or place it in the Captain's quarters on a US Navy warship to monitor activities in the intelligence room. Just imagine....



PART NUM	DESCRIPTION	LIST
<b>AN-1000X SPEAKER MONITOR</b>		
AN-1000X	Two-way Speaker Monitor	455
AN-1001X	Unpowered Companion to AN-1000X	142
AN-1001X/70	Two-way Speaker Monitor w/ internal 70 Volt transformer	165
<b>MICROPHONE</b>		
MIC-90	Professional dynamic cardioid pattern handheld mic, 1/4" phone	116
<b>ACCESSORIES</b>		
SS-250	Speaker Stand for use with SB-1	106
MSB-201	Mic Stand with Boom	69
HC-1550	Traveling hard case holds 2 AN-100 or AN-1000X & 2 mics	190
HC-1610B	Projector Protector traveling hard case holds projector, AN-130 and mic	295
CC-100XL	Extra large carrying bag, holds AN-1000X, SB-1, body pack and mic	51
CC-100	AN-1000X carrying bag	42
CC-550	Speaker stand bag	105
<b>BRACKETS</b>		
SB-1	Stand mount bracket for use with SS-250	64
SB-3	Ceiling mount bracket, black	27
SB-3P	Ceiling mount bracket, platinum	27
SB-360	Wall-mounting U bracket - 360° range of motion, black	32
SB-360P	Wall-mounting U bracket - 360° range of motion, platinum	32
RM-1	Single Rackmount (black, 3 U rack spaces)	69
RM-12	Dual Rackmount (black, 3 U rack spaces)	79
<b>CABLES</b>		
SC-50	50' speaker cable; 1/4" phone plugs	37
LINE-30M	30' shielded line cable, male to male	36



**MIC-90 - Professional Dynamic Mic with Case and Cable**



The AN-1001X/70 is an unpowered speaker with a 70 Volt transformer that was developed for sound contractors who want to use this incredibly clear speaker in large scale installations. Mounting hardware allows the AN-1001X/70 to be positioned on the wall, on the ceiling or in an A/V rack.



AN-1000X



Product HWD: 5.25" x 8.4" x 9"  
Box: 11" x 14" x 6"  
Ship Weight: 10 lbs.



- 106 dB SPL from 50W Amplifier
- High Efficiency Speaker
- Balanced Input, Mic/Line
- Configurable with Female XLR, Switchable Phantom Power
- Hi-Z RCA Line Level Input
- Hi-Z 1/4" Line Level Output
- 1/4" Speaker Output
- Bass and Treble Controls
- Magnetically Shielded Speakers
- Woven Carbon Fiber Speaker

# MegaVox Pro

## MEGA-BP Megavox Pro Basic Package includes:

MEGA-6000U1 with wireless receiver, SS-550 speaker stand, choice of transmitter: WH-6000 handheld or WB-6000 body pack and choice of wireless mic: LM-60 lapel, HBM-60 headband, CM-60 Collar, EM-60T UltraLite

LIST

\$1240

## MEGA-BP Dual Megavox Pro Basic Package includes:

MEGA-6000U2 with 2 wireless receivers. Accessories same as MEGA-BP plus second wireless mic

LIST

\$1725



## MEGA-DP Megavox Pro Deluxe Package includes:

MEGA-6000U1 with wireless receiver, MEGA-6001 companion speaker, SC-50 connection cable, two SS-550 speaker stands, choice of transmitter: WH-6000 handheld or WB-6000 body pack and choice of wireless mic: LM-60 lapel, HBM-60 headband, CM-60 Collar, EM-60T UltraLite

LIST

\$1613

## MEGA-DP Dual Megavox Pro Deluxe Package includes:

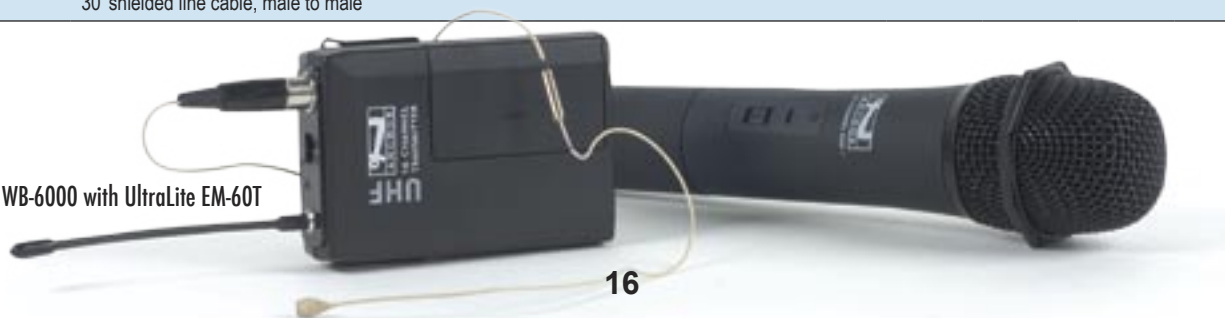
MEGA-6000U2 with 2 wireless receivers. Accessories same as MEGA-DP plus second wireless mic

LIST

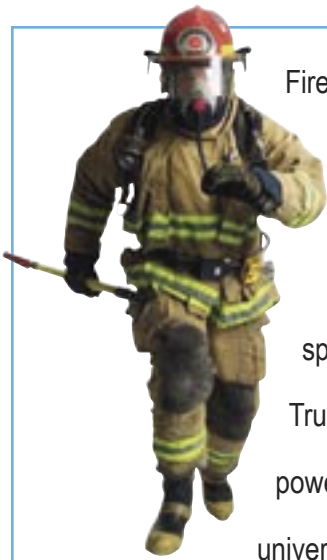
\$2098

PART NUM	DESCRIPTION	LIST
<b>MEGAVOX PRO PUBLIC ADDRESS SYSTEMS - Does not include wireless mic</b>		
MEGA-6000	MegaVox Pro PA System w/ wired mic	625
MEGA-6000U1	MegaVox Pro PA System w/ wired mic and built-in wireless receiver	765
MEGA-6000U2	MegaVox Pro PA System w/ wired mic and 2 built-in wireless receivers	900
MEGA-6001	Unpowered Companion	200
<b>MICROPHONES</b>		
WH-6000	Anchor UHF wireless handheld mic	365
WB-6000	Anchor UHF wireless body pack transmitter	275
EM-60T	UltraLite, barely seen over the ear mic/TA4F, mini XLR (tan mic arm)	90
CM-60	CollarMic/TA4F, mini XLR	90
LM-60	Lapel Mic/TA4F, mini XLR	90
HBM-60	Headband Mic/TA4F, mini XLR	90
MIC-90P	Professional dynamic cardioid pattern handheld mic, 1/4" phone	116
MIC-50	Professional dynamic handheld mic	101
<b>ACCESSORIES</b>		
SS-550	Heavy-duty stand	148
HC-1650 M/V	Custom traveling hardcase on wheels w/extension handle	295
SOFT TOTE	Nylon case cover on rollers	185
NL-MEGA	Nylon slip cover w/ side storage compartment	42
CC-550	Speaker stand bag	105
RC-6000	Replacement AC charger adapter	26
MEGA-BAT	Replacement battery	38
<b>CABLES</b>		
SC-50	50' speaker cable; 1/4" phone plugs	37
6000-14P	Body pack to 1/4" phone plug for wireless transmission of CD, mixer or metronome	32
6000-18P	Body pack to 1/8" phone plug for wireless transmission of CD, tape or metronome	32
6000-XLR	Body pack to XLR phone plug for wireless transmission from mixer to another LIB or XTR	32
LINE-30M	30' shielded line cable, male to male	36

WH-6000, WB-6000 with UltraLite EM-60T







Firemen, policemen, coaches, FBI agents, Marine drill sergeants, and auctioneers all choose the MegaVox Pro. This PA system delivers 126 dB SPL of clear speech projection from a 22W amplifier. True AC/DC functionality with a 110/220 power supply make the MegaVox Pro truly universal – take it anywhere! Weighing in at only 15 pounds, the MegaVox Pro has optional single or dual UHF receiver.



MEGA-BP  
MEGAVOX PRO BASIC PACKAGE

Product HWD: 13" x 9" x 14"  
HWD: 17" x 15" x 11"  
Ship Weight: 18 lbs.  
Add 2 lbs. for optional configurations



- 1 or 2 Wireless Receivers
- Built-in UHF Receiver Option
- Receiver has 16 User-Selectable Channels
- 30 Watts
- Dual UHF Wireless Option
- Built-in Rechargeable Battery
- True AC/DC, 110/220 Power Supply
- Signal Alert Button
- 1/4" Line Input
- Auxilliary Input
- Line Level Output
- External Speaker Output



# MiniVox

## MINI-BP MiniVox Basic Package includes:

PB-25W with wireless receiver, choice of transmitter: WH-1000 handheld or WL-1000 body pack and choice of wireless mic: LM-30 lapel, HBM-35 headband, CM-10000 Collar Mic and CC-25 carrying bag

LIST  
\$713

PART NUM	DESCRIPTION	LIST
<b>MINIVOX PUBLIC ADDRESS SYSTEM - Does not include wireless mic</b>		
PB-25	MiniVox PA System w/ wired mic	298
PB-25W	MiniVox PA System w/ wired mic & built-in wireless receiver	448
PB-25T	MiniVox w/built-in tape player	398
<b>MICROPHONES</b>		
WH-1000	Wireless handheld mic	245
WL-1000	Wireless body pack transmitter	155
CM-1000	Collar Mic	90
LM-30	Lapel Mic	90
HBM-35	Headband Mic	90
MIC-25	Handheld mic; 1/4" phone plug	58
MIC-50	Professional dynamic handheld mic	101
MIC-90P	Professional dynamic cardioid pattern handheld mic	116
<b>ACCESSORIES</b>		
RC-25	Battery kit includes 9 rechargeable "C" size batteries	99
CC-25	Nylon carrying bag	42

# Little Big Horn

- 30 Watts
- Neodymium Speaker
- Rechargeable Batteries
- Signal Alert Button

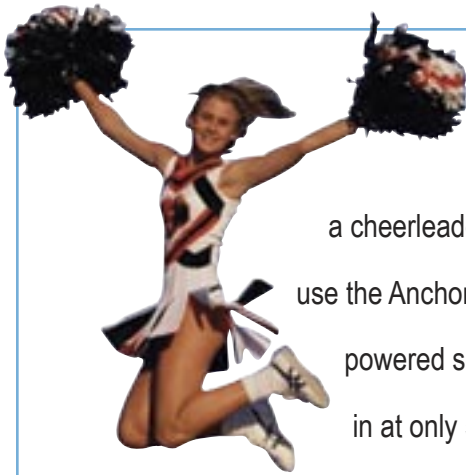


Emergency situations require emergency

preparedness measures. That includes an easy to use, easy to store and very loud speaker to be heard clearly and distinctly. In the event of an evacuation everyone must hear instructions for crowd control. The Little Big Horn is loud – you can

hear it over 1,000 yards away. It even has a siren signal alert for getting everyone's attention.

PART NUM	DESCRIPTION	LIST
<b>LITTLE BIG HORN PUBLIC ADDRESS SYSTEM</b>		
LBH-30	Little Big Horn Megaphone	125
RC-LBH	Battery Kit includes AC adapter/charger & 8 rechargeable batteries	100



What do the President of the United States, a tour guide and a cheerleader have in common? Why they all use the Anchor Audio MiniVox portable, battery-powered sound system. The MiniVox weighs in at only 5.5 pounds, runs for 24 hours on a set of nine "C" cell alkaline batteries and can project to a crowd of 150 people. With a wireless microphone, it is the most convenient little sound system around, and it delivers the distinctive Anchor Audio sound quality.



Product HWD: 8" x 6.5" x 9.5"  
Box: 11.5" x 8.25" x 8.25"  
Ship Weight: 6 lbs.

- 103 dB SPL from 15W Amplifier and High Efficiency speaker
- Lightweight and Compact
- Operates on Nine "C" Cell Batteries
- Lo-Z Mic Input, 1/4" Phone
- Lo-Z Mic Input with Condenser Mic Power
- Line Level Input for CD/Tape, 3.5 mm
- Optional Rechargeable Kit
- Includes Mic-25 Handheld Mic with 6" Coiled Cord
- Shoulder Strap
- VHF Wireless Option Available



# Ensign Pro

## ENS-EP-6000 Economy Package includes:

ENS-6000 Ensign PRO Lectern and SOFT-TOTE-ENS soft Rolling Case

### LIST

\$1178

## ENS-BP-6000 Ensign PRO Basic Package includes:

ENS-6000CU1 Ensign PRO Lectern w/Built-in CD Player and 1 Wireless Receiver, choice of transmitter: WH-6000 handheld or WB-6000 body pack and choice of mic: LM-60 lapel, HBM-60 headband, CM-60 Collar, EM-60T UltraLite and SOFT-TOTE-ENS Soft Rolling Case

### LIST

\$2037

## ENS-BP-6000 DUAL Ensign PRO Basic Package includes:

ENS-6000CU2 Ensign PRO Lectern w/Built-in CD Player and 2 Wireless Receivers, choice of any two transmitters: WH-6000 handheld or WB-6000 body pack and choice of mic: LM-60 lapel, HBM-60 headband, CM-60 Collar, EM-60T UltraLite and SOFT-TOTE-ENS Soft Rolling Case

### LIST

\$2633



PART NUM	DESCRIPTION	LIST
ENS-6000	Ensign PRO Sound System	1025
ENS-6000C	Ensign PRO Sound System w/Built-in CD palyer	1285
ENS-6000CU1	Ensign PRO Sound System w/Built-in CD Player & 1 Wireless Receiver	1545
ENS-6000CU2	Ensign PRO Sound System w/Built-in CD Player & 2 Wireless Receivers	1795
ENS-6000U1	Ensign PRO Sound System w/One Built-in Wireless Receiver	1285
ENS-6000U2	Ensign PRO Sound System w/Two Built-in Wireless Receivers	1545
EXP-60001	Unpowered Companion Speaker	315
MICROPHONES		
WH-6000	Anchor UHF wireless handheld mic	365
WB-6000	Anchor UHF wireless body pack transmitter	275
EM-60T	UltraLite, barely seen over the ear mic/TA4F, mini XLR	90
CM-60	CollarMic/TA4F, mini XLR	90
LM-60	Lapel Mic/TA4F, mini XLR	90
HBM-60	Headband Mic/TA4F, mini XLR	90
MIC-90	Professional dynamic cardioid pattern handheld mic	116
MIC-50	Professional dynamic handheld mic	101
ACCESSORIES		
SOFT-TOTE-ENS	Soft Rolling Case w/Collapsible Handle	184
SS-550	Heavy Duty Speaker Stand - use with EXP-6001	148
CC-550	Speaker stand bag	105
CABLES		
SC-50	50' speaker cable; 1/4" phone plugs	37
ENS-BAT	Replacement battery	





The Ensign Pro is versatile enough to meet the needs of your most demanding customer – features and benefits out shine all the rest. If a school principal or park and rec director need a portable lectern sound system, the Anchor Audio Ensign Pro can stand up to the test. With an option of up to two wireless receivers, your customer also has a choice of hands free microphones.



Product HWD: 10.4" x 7.5" x 22.2" x 18"  
Box: 28" x 21" x 15"  
Ship Weight: 30 lbs.



- **Dual 4.5 Inch Neodymium Speakers**
- **True AC/DC - 110/220V Power Supply**
- **Weighs less than 23 lbs.**
- **Automatic Speech Project**
- **"Voice Over" Music Feature**
- **Single or Dual UHF Wireless 16 User Selectable Channels**
- **Sensitive Electret 24" Gooseneck Mic**
- **Detachable LED Reading Light**
- **Rugged Built-in CD Player**
- **Reaches Crowds up to 400**
- **Two Universal Input Jacks**
- **Active Distortion Limiter**
- **Output Powers Companion Speaker**

# Seville



The Seville lectern brings an air of strength and integrity to any presentation. With its built-in sound system and rich oak finish, the Seville is at home on stage, in an elegant hotel or in the university auditorium. The wireless model allows the presenter to use a projector or white board with hands free microphone.

PART NUM	DESCRIPTION	LIST
<b>SEVILLE LECTERN</b>		
LP-500	One Piece Lectern with built-in sound system	1900
LP-500W	One Piece Lectern with built-in wireless sound system - wireless mic not included	2150
LM-618	Lectern Gooseneck Mic	196
LC-650	Padded nylon slipcover	210
WH-58	Shure wireless handheld microphone	365
WB-II	Shure body pack transmitter	275
EM-60T	UltraLite, barely seen over the ear mic/TA4F, mini XLR	90
CM-60	Collar Mic/TA4F, mini XLR	90
LM-60	Lapel Mic/TA4F, mini XLR	90
HBM-60	Headband Mic/TA4F, mini XLR	90

# Admiral



The Admiral lectern is an impressive housing for an Xtreme, Liberty or Explorer Pro sound system. The sound system fits into the rich oak cabinet space. The mic connection cable plugs into the back of the sound system, and you have turned a portable sound system into a formal, powered lectern.

PART NUM	DESCRIPTION	LIST
<b>ADMIRAL LECTERN</b>		
FL-4500	Admiral lectern with built-in reading light	1165
LK-LIB	Admiral with built-in reading light and Liberty - wireless receiver not included	2250
LK-XTR	Admiral with built-in reading light and Xtreme - wireless receiver not included	2150
LM-618	Lectern Gooseneck Mic	196
ELB	Console bracket to use w/ Explorer Pro	27
LC-400	Padded nylon slipcover	210

- Built-in Sound System
- 107 dB SPL from 70W Amplifier and High Efficiency speaker
- Sensitive Electret 24" Gooseneck Mic
- Shock Mounted Mic Input
- Bass and Treble Tone Controls
- Oak Finish
- Reading Light
- Shure VHF Wireless Option Available



Product HWD: 49" x 24" x 21"  
 Box: 54" x 28" x 25"  
 Ship Weight: 145 lbs.



Product Dimensions:  
 Total HWD: 46" x 25" x 20"  
 Tabletop WD: 23" x 18"  
 Console Cavity HWD: 22" x 13" x 10"

Box Dimensions:  
 Top and base HWD: 26" x 12" x 23"  
 Ship Weight: 46 lbs.  
 Console Cavity HWD: 42" x 28" x 14.5"  
 Ship Weight: 36 lbs.



- Solid Oak Top with Oak Laminate Center Console
- Gooseneck Electret Mic
- Reading Light Option
- Shock Mounted Mic Input
- Tilt-N-Roll Casters
- Xtreme, Liberty or Explorer Sound Systems can be used

# Portacom

## COM-40FC

4 Headsets - No Cables Package includes: PC-100 power console, four dual earpiece H-200 headsets, four BP-200 belt packs, and one CC-15F deluxe carrying case. Cables not included

**LIST**  
\$1950

## COM-60FC

6 Headsets - No Cables Package includes: PC-100 power console, six dual earpiece H-200 headsets, six BP-200 belt packs, one B3-100 branch box and one CC-15F deluxe carrying case. Cables not included

**LIST**  
\$2798



## COM-40FC/C

Headsets with Cables Package includes: PC-100 power console, four dual earpiece H-200 headsets, four BP-200 belt packs, four EX-50M 50' cables, one CC-15F deluxe carrying case and one CC-PC cable bag.

**LIST**  
2196

## COM-60FC/C

Headsets with Cables Package includes: PC-100 power console, six dual earpiece H-200 headsets, six BP-200 belt packs, one B3-100 branch box, seven EX-50M 50' cables, one CC-15F deluxe carrying case and one CC-PC cable bag.

**LIST**  
3240

PART NUM	DESCRIPTION	LIST
<b>PORTACOM TWO-CHANNEL WIRED INTERCOM</b>		
PC-100	Power Console powers up to 20 BP-200 belt packs; 4	300
BP-200	Belt Pack w/ volume control, A/B channel switch and mic on/off switch; call light; standard XLR-3 line connector and XLR headset connector	190
H-200	Headset-dual-earpiece w/ 5' cable and female XLR-4 connector	190
H-200S	Headset-single-earpiece w/ 5' cable and female XLR-4 connector	190
B3-100	Branch Box - expanding applications w/ 1 input, 3 outputs	115
<b>CABLES</b>		
EX-25M	25' cable; XLR	37
EX-50M	50' cable; XLR	53
EX-75M	75' cable; XLR	74
<b>ACCESSORIES</b>		
PGM-100	Program/Mixer feedback module - line in/line out XLR	225
CC-15	Carrying Case without foam insert	133
CC-15F	Case with Foam	190
RM-100	Rack for 1 or 2 PC-100's; 1.75" x 19" space	64
CC-PC	Canvas cable bag	42
AC-20	AC Power Adapter (replacement)	42

PC-100, B3-100, BP-200 and H-200S





## **TWO CHANNEL WIRED INTERCOMS**

PortaCom is a flexible, high-performance wired intercom system. Built smart and simple, PortaCom gives you two channels without sacrificing power or quality. It is expandable, portable or rack mountable. It even has an optional battery supply module for remote locations. Best of all PortaCom is priced to sell to the junior high school theater, the local cable studio or the high school football coach.



- 2 Channel, Wired Full Duplex Systems
- High Performance - Low Cost
- AC/DC Operable
- Portable or Rackmountable (1 U Rack Space)
- Durable Lightweight Metal Packs
- Up to 20 Headset Capacity
- Standard Microphone Cable/3 Pin XLR Connectors
- Easy to Setup and Operate
- Comfortable Lightweight Noise Cancelling Headsets
- Optional Single, Dual or Mixed Headsets



# Portacom Pro

## PROCOM-40 Includes:

Four HW-300 headsets, four BPW-300 wireless belt packs, four AC-300 power chargers and one HC-PC deluxe carrying case.

**LIST**  
\$3215

## PROCOM-60

Six HW-300 headsets, six BPW-300 wireless belt packs, six AC-300 power chargers and one HC-PC deluxe carrying case.

**LIST**  
\$4730



PART NUM	DESCRIPTION	LIST
<b>PORTACOM TWO-CHANNEL WIRED INTERCOM</b>		
BPW-300	Wireless Belt Pack w/ 16 selectable channels in 2.4 GHz range, volume control, Push-to-Talk, All Call feature and L.E.D. indicator light	549
HW-300	Headset-dual-earpiece w/ 3.5' cable	190
HSW-300	Headset-single-earpiece w/ 3.5' cable	190
LSW-300	Lightweight Headset - Single Earpiece with 3ft. cable	110
ESW-300	Concealed Single Earpiece with attached microphone	110
<b>ACCESSORIES</b>		
HC-PC	Deluxe Carrying Case with custom cut foam	190
AC-300	AC Power Adapter	42



**PortaCom Pro** is a full duplex wireless intercom system. The use of the patent pending O.P.E.N. – Omni Point Expandable Network – allows an unlimited number of users to share the system simultaneously without the need of base station repeaters or active antennae. The lock out feature automatically prevents talk over disruption caused by multiple users on one system.

Digital key codes allow privacy between users – U.S.E. - User Selectable Encryption - is a simple, easy to use encryption selection feature that prevents unwanted eavesdropping. Proprietary addressing codes prevent unwanted noise.

Exclusive to PortaCom Pro is the All Call feature which brings any size group together for priority calls.

O.P.E.N. and U.S.E. are breakthroughs in digital voice transmission that set PortaCom Pro apart from any other intercom system. The patent pending combination of software and hardware allows full duplex digital communication in a completely unique manner. In the 2.4GHz range, you can take your PortaCom Pro anywhere in the world for exceptional operation.



- Omni Point Expandable Network
- 2.4 GHz World Wide Range
- Optional Single, Dual or Mixed Headsets
- 16 User Selectable Channels
- User Selectable Encryption
- Unlimited Headset Capability
- Easy to Setup and Operate
- Comfortable Lightweight Noise Cancelling Headsets
- 2 "AA" Rechargeable NiMH Batteries
- FCC License not required

# Transporters



BUILT TO PERFORM IN THE MOST SEVERE CONDITIONS...

- Waterproof
- Unbreakable
- Dustproof
- Corrosion Proof
- Lightweight Space-Age Structural Resin
- O-Ring Sealed
- Atmospheric Purge Valve



PART NUM	DESCRIPTION	LIST
<b>HARD CARRYING CASES</b>		
HC-1500	Holds Laptop	149
HC-1550	2 AN-100's & Mics	190
HC-1610B	Projector Protector	295
HC-1620	Explorer Pro	295
HC-1650L/X	Xtreme & Liberty	295
HC-1650MV	MegaVox Pro	295
HC-1750	Holds 2 Speaker Stands	295
<b>SOFT ROLLING CASE</b>		
SOFT TOTE	Nylon Case Cover on Rollers (Liberty, Xtreme, MegaVox)	185
ENS-SOFT-TOTE	Nylon Case Cover on Rollers (Ensign Pro)	185
EXP-SOFT TOTE	Nylon Case Cover on Rollers (Explorer Pro)	185

SOFT TOTE - Nylon Case Cover with pockets on rollers



PRODUCT	WT.	DIMENSIONS
<b>SOUND SYSTEMS</b>		
XTR-6000CU1	42 lbs..	15.25" x 12.25" x 26.75"
XTR-6001	33 lbs..	15.25" x 12.25" x 26.75"
LIB-6000HCU1	48 lbs..	15.25" x 12.25" x 26.75"
LIB-6001	33 lbs..	15.25" x 12.25" x 26.75"
LP-500	145 lbs.	25" x 28" x 54"
ENS-6000	30 lbs.	15" x 21" x 28"
EXP-6000U1	26 lbs..	14" x 13" x 21"
EXP-6001	18 lbs..	14" x 13" x 21"
AN-130	8 lbs..	9" x 11" x 13"
AN-1000X	9 lbs..	6" x 8.5" x 9.5"
AN-1001X	6 lbs..	6" x 8.5" x 9.5"
FL-4500	46 lbs.	23" x 12" x 26"
MEGA-6000U2	18 lbs..	15" x 11" x 17"
MEGA-6001	13 lbs..	15" x 11" x 17"
PB-25W	6 lbs..	10" x 11" x 14.5"
LBH-30	4 lbs..	15.5" x 9" x 9"
COM-40FC/C	26 lbs..	8" x 28" x 19.5"
COM-40FC	21 lbs..	8" x 28" x 19.5"
COM-60FC/C	36 lbs..	8" x 28" x 19.5"
COM-60FC	27 lbs..	8" x 28" x 19.5"
<b>TRANSPORTERS</b>		
HC-1500	9 lbs.	18.5" x 14.1" x 6.9"
HC-1550	13 lbs.	20.6875" x 17.2" x 8.6"
HC-1610B	30 lbs.	24.6" x 19.3" x 11.9"
HC-1620	30 lbs.	24.8" x 19.4" x 13.8"
HC-1650L/X	31 lbs.	32.5" x 20.5" x 11.3"
HC-1650MV	31 lbs.	32.5" x 20.5" x 11.3"
HC-1750	29 lbs.	53" x 17.4" x 6.1"
SOFT TOTE	6 lbs.	21" x 15" x 7"



PRODUCT	WT.	DIMENSIONS
<b>ACCESSORIES</b>		
MSB-201	7 lbs.	3.5" x 3.5" x 36"
RM-1	2 lbs.	9" x 6.25" x 6.75"
RM-12	2 lbs.	9" x 6.25" x 6.75"
SB-1	3 lbs.	N/A
SB-3P	2 lbs.	9" x 6.25" x 6.75"
SB-360P	2 lbs.	9" x 6.25" x 6.75"
SC-50NL	4 lbs.	N/A
SC-100NL	6 lbs.	N/A
SS-250	8 lbs.	4.75" x 4.75" x 40"
SS-550	9 lbs.	6" x 6" x 47"
<b>SOFT CASES/COVERS</b>		
CC-20	1 lbs..	N/A
CC-25	1 lbs..	N/A
CC-100	1 lbs..	N/A
CC-100XL	2 lbs.	N/A
CC-550	7 lbs..	N/A
LC-400	5.5 lbs.	8" x 24" x 24"
LC-650	5.5 lbs.	8" x 24" x 24"
NL-2500	4 lbs..	N/A
NL-MEGA	4 lbs..	N/A
NL-6000	4 lbs..	N/A
<b>LECTERNS - Call for freight information</b>		



**ANCHOR AUDIO – PRODUCT/MARKET MATRIX**

Consult the table below to identify any *Untapped Markets* for Anchor Audio products.

**SIX YEAR WARRANTY**  
**MADE IN THE USA**  
**30 YEARS STRONG**  
**NO DROPSHIP FEES**

	<b>Xtreme</b>	<b>Liberty</b>	<b>Explorer PRO</b>	<b>AN-130</b>	<b>AN-1000X</b>	<b>MegaVox PRO</b>	<b>MiniVox</b>	<b>Little Big Horn</b>	<b>64 Channel UHF Wireless</b>	<b>Ensign Pro Lectern</b>	<b>Lecterns</b>	<b>PortaCom</b>

	<b>5,000</b>	<b>2,000</b>	<b>800</b>	<b>100</b>	<b>400</b>	<b>3,000</b>	<b>150</b>	<b>50</b>	<b>n/a</b>	<b>400</b>	<b>750</b>	<b>n/a</b>
<b>Crowd Size</b>												
<b>Platinum Price</b>	\$698	\$812	\$519	\$120	\$259	\$356	\$170	\$71	\$285	\$584	call	call
<b>MAP Price</b>	\$980	\$1140	\$728	\$152	\$364	\$500	\$238	\$100	\$400	\$820	call	call
<b>List Price</b>	\$1225	\$1425	\$910	\$190	\$455	\$625	\$298	\$125	\$500	\$1025	call	call
<b>Education</b>												
Classrooms – Teachers												
Lecture Halls – Professors												
Assemblies – Principal												
Graduations/ Presentations – Principals												
Library / AV												
Marching Band/ Band Director												
Choir / Orchestra – Director												
Cheerleading/Pep Squad – Activities Director												
Sporting Events – Athletic Director												
All Sports – Individual Coaches												
Music Dept/Dance – Music Teacher												
Special Events Indoor/Outdoor – Activities Director												
Crowd Control/ Emergency Preparedness – Security Administrator												
Ceremonies												
Auditorium/Gymnasium												
Drama – Theater Director												
ROTC												

= SUGGESTED APPLICATION



**ANCHOR AUDIO – PRODUCT/MARKET MATRIX**

**SIX YEAR WARRANTY**  
**MADE IN THE USA**  
**30 YEARS STRONG**  
**NO DROPSHIP FEES**

	<b>Xtreme</b> 	<b>Liberty</b> 	<b>Explorer PRO</b> 	<b>AN-130</b> 	<b>AN-1000X</b> 	<b>MegaVox PRO</b> 	<b>MiniVox</b> 	<b>Little Big Horn</b> 	<b>64 Channel UHF Wireless</b> 	<b>Ensign Pro Lectern</b> 	<b>Lecterns</b> 	<b>PortaCom</b> 
--	--	---	--	--	--	---	--	---	---	--	--	--

<b>State &amp; Local Government</b>												
City Officials												
Police/Fire Departments												
Homeland Security												
Parks & Rec												
Airports												
<b>Federal Government</b>												
Homeland Security												
Military												
Law Enforcement												
Judicial System												
<b>Entertainment Industry</b>												
Movie/TV Sets												
Amusement Parks												
Orchestras												
Video Editing												
Performing Arts Center												
DJ & Party Rentals												
<b>Business</b>												
Rental & Staging												
Clubs/Studios												
Shopping Centers												
Hotels/Resorts												
Meeting Halls/ Restaurant												
Board/Meeting Rooms												
Installers												
Convention Centers/ Trade Shows												
Stadiums/Arenas												
<b>Houses of Worship</b>												
Choir												
Camps/Retreats												
<b>Misc</b>												
Auctions – Auctioneers												
Funeral Homes – Funeral Directors												
Zoo – Public Activities Director												

#### PAYMENT TERMS

3% 15 Days, Net 30 Days for payments in cash or by check, or 3% discount on Credit Card payments made at time of order.

#### FREIGHT

All orders are FOB Torrance, CA. Free freight is offered on orders of \$5,000 (or greater) shipping to one location in the continental US. Seville lecterns are excluded from free freight provisions. A freight handling charge is included on the invoice.

#### RETURN POLICY

Anchor Audio will accept the return of product under the following three conditions:

1. Anchor Audio ships product other than that ordered by the Dealer.
2. Anchor Audio ships product to an address other than specified by the Dealer's P.O.
3. Anchor Audio ships product that is defective.

In all cases, Dealers must first obtain approval for any product they are attempting to return to Anchor Audio. Upon approval, a Return Authorization (RA) number will be issued by the Anchor Audio Customer Service Department and must accompany all products returned. Products returned without approval & RA number will be returned to the sender.

Shipping cost on returned product is as follows:

- Out-of-Box Failure – Anchor Audio issues call-tag and pays for return shipping
- Warranty Repair – Customer pays for return shipping

All returned product is subject to a minimum 15% re-stocking charge. Any remaining credit will be applied to future orders. All product returned must be a current production model and in "new" condition. Anchor Audio will inspect all returned product and reserves the right to levy additional refurbishment charges if the returned product is not in "new" condition.

#### LOSS or FREIGHT DAMAGE

All shipments are thoroughly inspected by Anchor Audio and carefully packed prior to shipment. Anchor Audio will consolidate orders, when applicable, to conserve shipping costs (unless otherwise advised by the Dealer). Anchor Audio will only be responsible for the order up to the time of pick-up by the carrier (usually UPS). Recipient is strongly urged to inspect the shipment upon arrival and prior to signing for the product. If the shipment is damaged, refuse to accept the order.

#### DROP SHIPMENT

There is no additional charge for drop shipment when the entire order is shipped to one address. Anchor Audio will charge a \$15 handling fee for each additional ship-to address. Anchor Audio accepts no responsibility for refused shipments, inability to deliver shipment, "no such address" returns, receipt by unknown person, or any other receiving discrepancy. If re-shipment is requested as a result of incorrect shipping address, an additional shipping charge may apply.

#### RUSH CHARGES

Anchor Audio will charge a \$35 expedite fee for orders that require same-day shipment. Same-day ship orders must be placed prior to 11:00 AM California time. This \$35 expedite fee will also apply to items that have options added (standard installation time is 5 working days) or modifications made to the order on the scheduled day of shipment.

#### WARRANTY STATEMENT

Anchor Audio products are warranted to be free from defects in materials and workmanship for the period of SIX (6) YEARS from the date of original purchase unless listed below:

1. Batteries in the Liberty, MegaVox Pro, Explorer Pro and Ensign Pro sound systems shall be warranted for a TWO (2) YEAR period.
2. PortaCom headsets shall be warranted for a TWO (2) YEAR period.
3. Built-in CD players shall be warranted for a TWO (2) YEAR period.

And, all warranties are subject to the following conditions:

1. The product must have been purchased from an authorized Anchor Audio Dealer or representative.
2. Anchor Audio must perform all warranty service. Any service performed without Anchor Audio's authorization will void the entire warranty.
3. This warranty does not cover any product that has been subjected to negligent use, connection to improper power source, misuse, or operated beyond its manufactured specifications and limits, or has not been reasonably maintained.
4. Warranty shall not apply to batteries (other than those mentioned in item #4), exterior finish, AC power cords, bulbs, or any other failings due to normal wear.
5. Warranty is void when equipment is subjected to adverse temperature, humidity, moisture, or other condition that is not considered normal environmental conditions.
6. This warranty excludes all damages or defects caused by shipping, transporting, or incorrectly packing for shipment.

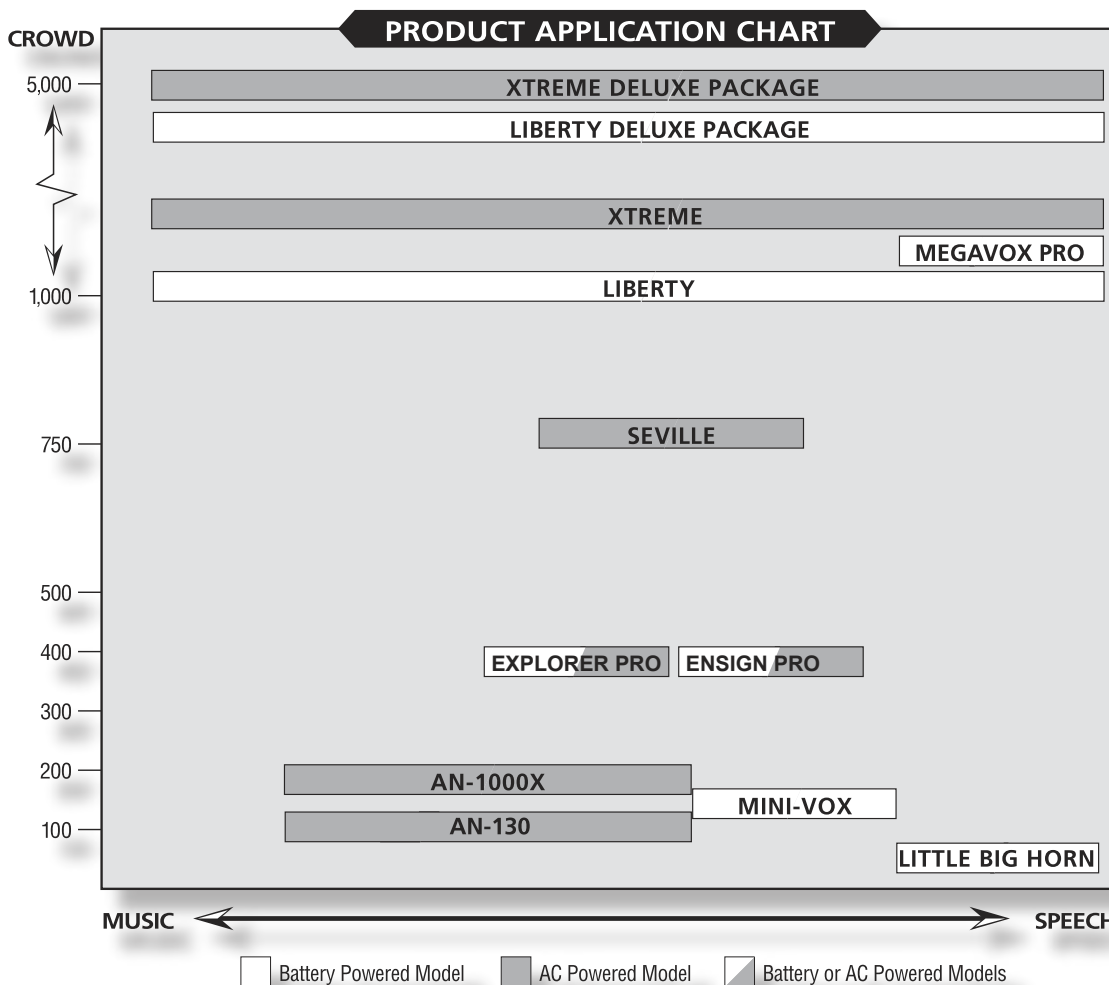
FOR WARRANTY SERVICE, PLEASE CONTACT ANCHOR AUDIO'S CUSTOMER SERVICE DEPARTMENT AT: (800) 262-4671, extension 5, TO OBTAIN RETURN AUTHORIZATION APPROVAL AND AN RA NUMBER.



The Anchor Audio product line is designed to suit a variety of end-user requirements. While anyone who must project their voice as a part of their profession is a potential Anchor Audio customer, the teacher's sound system requirements in a classroom differs significantly from the requirements of a drill sergeant on a military base. To determine the best Anchor Audio product for a particular customer, we recommend the following conversation:

1. General description of the customer's application,
2. Need for speech AND music or speech only?
3. Plan to use the system indoors AND outdoors, or outdoors only?
4. A/C power available?
5. Maximum number of people in audience?

Based on this information, refer to the following chart to suggest a specific product:



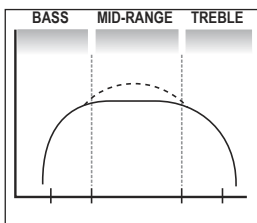
NOTE: Estimating crowd size is tricky business due to ambient noise conditions, construction materials in the room, shape of terrain in an outdoor environment, microphone handling techniques of the individual who is speaking, etc. Anchor Audio engineers have made their estimates based on the following factors:

- SPL rating of each sound system, without a companion speaker (except deluxe packages),
- Typical distance covered by a given level of SPL,
- Angle of the sound field for each product,
- Number of people who can fit into that sound field at 12 sq..ft. per person.

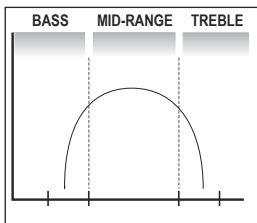
Anchor Audio focuses its design efforts on voice intelligibility. Two factors contribute to intelligibility:

PROPER FREQUENCY RESPONSE and LOW DISTORTION allow Anchor Audio Sound Systems to deliver excellent voice intelligibility.

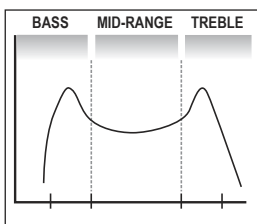
1. **Frequency Response** – Anchor Audio sound systems are designed to emphasize the mid-range frequencies to enhance vocal intelligibility. Music-oriented systems artificially boost the bass and treble amplification in order to deliver "boom and sizzle"; however, this design causes the voice reproduction to be muddy and hard to understand. Anchor systems accentuate the mid-range where vocal intelligibility exists. We then use bass and treble frequencies to give the voice a natural warmth.



**Anchor's "Music & Voice" sound systems** deliver a smooth frequency response through the mid-range for clear, natural voice amplification. On the Xtreme and Liberty models, the "Speech Projection" switch boosts the mid-range for even greater speech projection (that's the dotted line).



**Anchor's "Public Address" systems** including the MegaVox, MiniVox and Little Big Horn deliver their power in the mid-range to maximize clear vocal intelligibility. For crowd control, coaching instructions or demonstrating the use of heavy equipment outdoors, this is the type of sound system to choose.



**Competitive sound systems that are designed primarily for music** boost the bass and treble in order to deliver that "boom & sizzle" which we all love. Unfortunately, that design overwhelms the mid-range frequencies and results in muddy, hard to understand speech projection.

2. **Distortion** - Anchor Audio sound systems are designed for low distortion (accurate sound reproduction). The factors that contribute to this accuracy include:

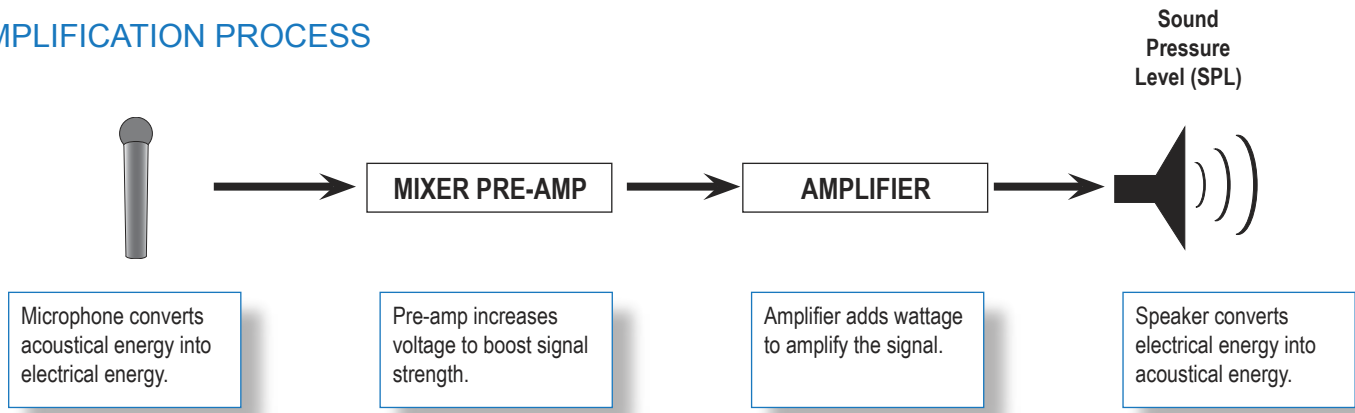
- **Accurate / Low Noise Electronics** – Anchor's amplifier designs can deliver unusually high peak power levels and incorporate "active dynamic limiting" which combine to prevent overloading and distortion of the sound. This insures clean, pure sound at even the highest power levels.
- **Enclosure Resonance** – Anchor's enclosures are designed to resist vibration and internal echoes; therefore, the enclosure itself does not distort the sound.
- **High Quality Speakers** – Sophisticated speaker design, quality materials, precise magnetizing of the speakers and excellent assembly workmanship all contribute to crisp, pure sound.

**The result is accuracy and intelligibility, and no one does it better.**

SOUND PRESSURE LEVEL (SPL) is a measure of loudness. Anchor Audio designs its sound systems to deliver the maximum SPL while minimizing weight, size and power consumption on battery-powered systems.

How do you measure how loud something is? Many people think that comparing wattage ratings of various sound systems is a relevant measure, but wattage is only one element in the equation. SPL, which is measured in dB (decibels), results from a combination of (1) microphone sensitivity, (2) mixer pre-amp voltage, (3) main amplifier wattage, and (4) speaker efficiency.

## AMPLIFICATION PROCESS



The goal of an Anchor Audio sound system is to balance each stage of the amplification process in order to maximize SPL without generating distortion by overdriving the system. If you are assembling a component-based system, you will have to balance the power and sensitivities of each part of the system; however, in a packaged system, sensitivities and wattage are handled by the manufacturer and the only relevant measure is the ultimate SPL of the package.

Anchor Audio's products have optimized the balance between SPL, weight of the system, size and battery life in order to suit the needs of our various customers. Anchor's products are rated based on their dB levels and the following chart will provide a general understanding of how loud the different dB ratings are in the real world.

COMMON SOUNDS	SPL	ANCHOR AUDIO	SPL
Threshold of hearing	0 dB		
Rustling leaves	20 dB		
Quiet whisper	30 dB		
Normal conversation	60 dB		
Loud singing (3 feet)	75 dB		
Food blender	90 dB		
		AN-130	101 dB
		AN-1000X	103 dB
		Ensign Pro	105 dB
Power mower	107 dB	Seville Lectern	107 dB
		MiniVox	108 dB
		Explorer Pro	110 dB
		Liberty	117 dB
Chain saw (3 feet)	117 dB	Little Big Horn	117 dB
		Liberty and Companion	123 dB
Amplified rock & roll (6 feet)	120 dB	Xtreme	123 dB
		MegaVox	126 dB
		Xtreme and Companion	129 dB
Jet plane (100 feet)	130 dB		

NOTE: An increase of 6 dB represents a doubling of SPL (loudness)

**Anchor Audio Sound Systems are LOUD... VERY LOUD.**

AN-130 . . . . .	12	LBH-30 . . . . .	18	SS-250 . . . . .	12,14
AN-130CG . . . . .	12	LC-400 . . . . .	22	SS-550 . . . . .	6,8,10,16
AN-130DC . . . . .	12	LC-650 . . . . .	22	UHF-6400 . . . . .	4,6,8,10
AN-130 RC . . . . .	12	LIB-6000 (all models) . . . . .	8	WB-58 . . . . .	22
AN-130U1 . . . . .	12	LINE-30M . . . . .	8,14	WB-6000 . . . . .	6,8,12,16,20
AN-1000X . . . . .	14	LK-LIB . . . . .	22	WH-II . . . . .	22
AN-1001X . . . . .	14	LK-XTR . . . . .	22	WH-1000 . . . . .	18
AN-1001X/70 . . . . .	14	LM-30 . . . . .	18	WH-6000 . . . . .	6,8,12,16,20
BWK-II . . . . .	6,8	LM-60 . . . . .	6,8,10,12,16,20,22	WL-1000 . . . . .	18
CC-25 . . . . .	18	LM-618 . . . . .	22	XLR-50MF . . . . .	6,8,10
CC-100 . . . . .	12,14	LSW-300 . . . . .	26	XTR-6000 (all models) . . . . .	6
CC-100LX . . . . .	12,14	MEGAVOX PRO (all models) . . . . .	16	6000-14P . . . . .	6,8,16
CC-550 . . . . .	6,8,10,16	MIC-25 . . . . .	18	6000-18P . . . . .	6,8,16
CM-60 . . . . .	6,8,10,12,16,22	MIC-50 . . . . .	10,16,18,20	6000-XLR . . . . .	6,8,16
CM-1000 . . . . .	18	MIC-90 . . . . .	6,8,10,14,20		
ELB . . . . .	22	MIC-90P . . . . .	10,12,16,18		
EM-60T . . . . .	6,8,10,12,16,20,22	MSB-201 . . . . .	6,8,10,12,14		
ENS-6000 (all models) . . . . .	20	NL-EXP . . . . .	10		
ESW-300 . . . . .	26	NL-6000 . . . . .	6,8		
EX-25M . . . . .	24	NL-MEGA . . . . .	16		
EX-50M . . . . .	24	PB-25 . . . . .	18		
EX-100M . . . . .	24	PB-25W . . . . .	18		
EXP-6000 . . . . .	10	PORTACOM . . . . .	24,25		
EXP-6000U1 . . . . .	10	RC-6000 . . . . .	16		
EXP-6000U2 . . . . .	10	RC-25 . . . . .	18		
EXP-6001 . . . . .	10	RM-1 . . . . .	12,14		
EXP-SOFT-TOTE . . . . .	10	RM-12 . . . . .	12,14		
EXP-MIC-TOTE . . . . .	10	SB-1 . . . . .	12,14		
FL-4500 . . . . .	22	SB-3 . . . . .	12,14		
HBM-35 . . . . .	18	SB-3P . . . . .	12,14		
HBM-60 . . . . .	6,8,10,12,16,20,22	SB-360 . . . . .	12,14		
HC-1500 . . . . .	12,28	SB-360P . . . . .	12,14		
HC-1550 . . . . .	14,28	SC-50 . . . . .	8,10,14,16,20		
HC-1610B . . . . .	12,14,28	SC-50NL . . . . .	6		
HC-1620 . . . . .	10,28	SC-100NL . . . . .	6		
HC-1650L/X . . . . .	6,8,28	SC-50EX . . . . .	8,10		
HC-1650MV . . . . .	16,28	SOFT TOTE . . . . .	6,8,16		
HC-1750 . . . . .	28	SOFT TOTE ENS . . . . .	20		

